

40.581705
-77.891294

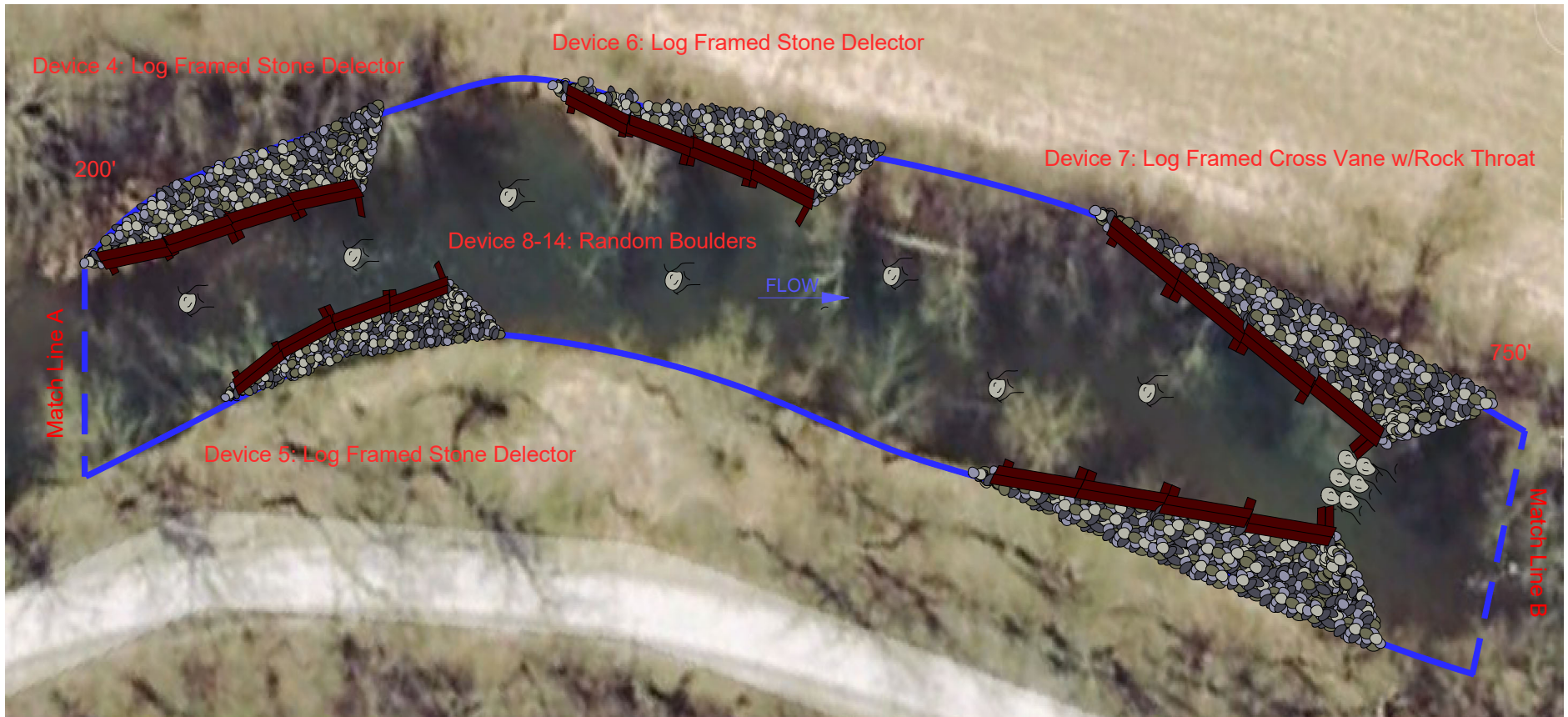
Standing Stone Creek Section 1



| | | |
|---|----------------------------------|-----------------|
| Standing Stone Creek, Huntingdon County | | |
| Huntingdon County Conservation District | | |
| Fish Habitat Improvement Plan | | |
| Stream Section, Habitat Management Division | | |
| Pennsylvania Fish & Boat Commission | | |
| Drawn By: Jacob Finkle | Habitat Manager: Jacob Finkle | Date: 1-3-23 |
| Not to Scale | All Measurements Approximate | Fit in Field |

40.581705
-77.891294

Standing Stone Creek Section 2



Standing Stone Creek. Huntingdon County

Pennsylvania Fish & Boat Commission

1-3-23

Page 2 of 4

40.581705
-77.891294

Standing Stone Creek Section 3



Standing Stone Creek. Huntingdon County

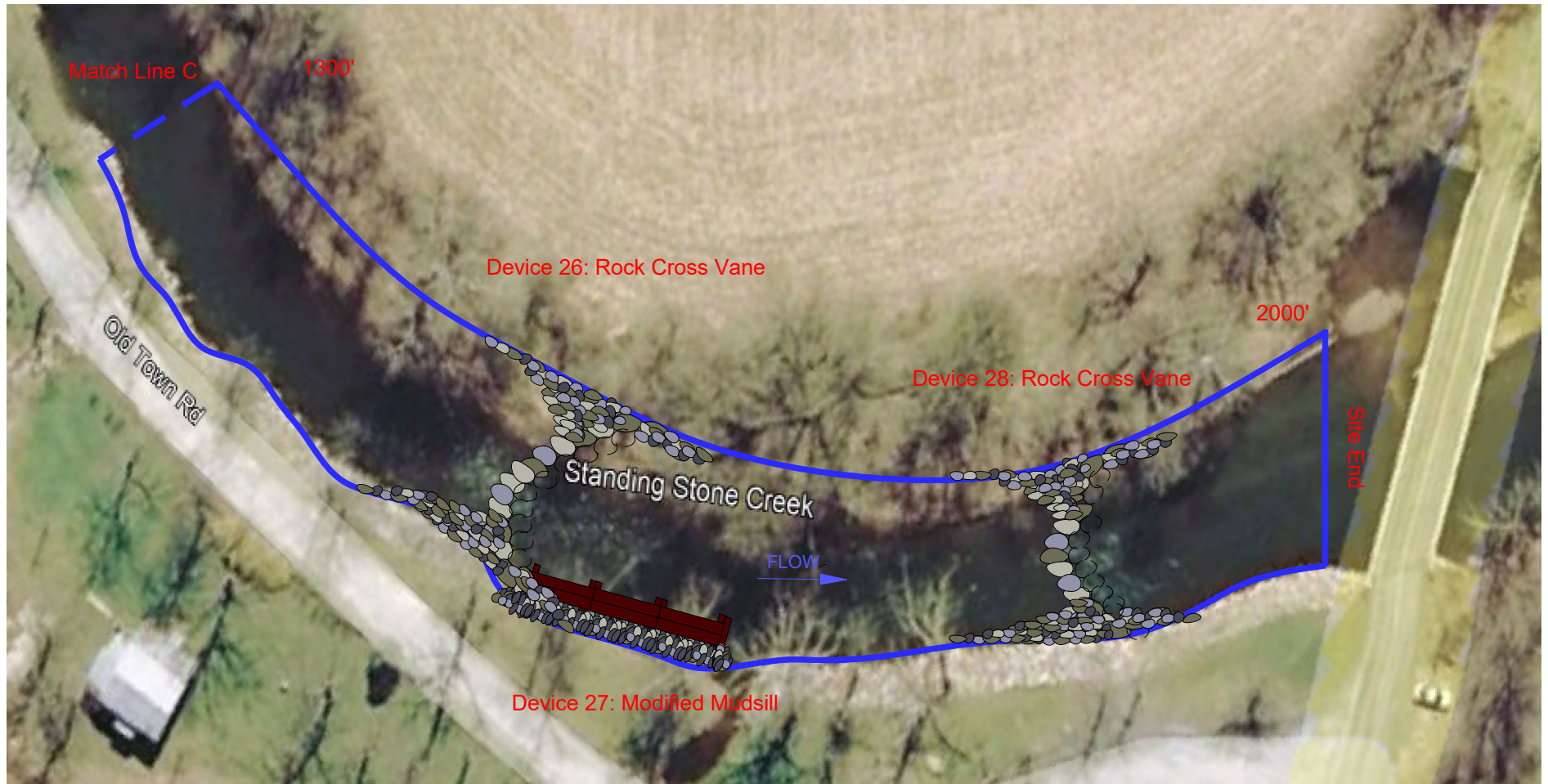
Pennsylvania Fish & Boat Commission

1-3-23

Page 3 of 4

40.581705
-77.891294

Standing Stone Creek Section 4



| | |
|---|-------------|
| Standing Stone Creek. Huntingdon County | |
| Pennsylvania Fish & Boat Commission | |
| 1-3-23 | Page 4 of 4 |

Standing Stone Creek
Huntingdon County
Section 1

| | |
|------------------------|----|
| Logs 10' x 10-12" Dia. | 29 |
| Logs 15' x 10-12" Dia. | 0 |
| Logs 20' x 8-12" Dia. | 35 |
| Logs 25' x 8-12" Dia. | 0 |
| Logs 30' x 8-12" Dia. | 0 |

Rootwads 10' stem attached to 4-5' rootball: 0

Stone:

12-24" Dia. 160 Tons

12-18" Dia. 0

3-6" Dia. 0

24-36" Dia. 0

Geo Fabric: 6' x 0

Rebar 4' 73

Rebar 2' 58

Standing Stone Creek
Huntingdon County
Section 2

| | |
|------------------------|----|
| Logs 10' x 10-12" Dia. | 35 |
| Logs 15' x 10-12" Dia. | 0 |
| Logs 20' x 8-12" Dia. | 45 |
| Logs 25' x 8-12" Dia. | 0 |
| Logs 30' x 8-12" Dia. | 0 |

Rootwads 10' stem attached to 4-5' rootball: 0

Stone:

12-24" Dia. 230 Tons

12-18" Dia. 0

3-6" Dia. 0

24-36" Dia. 20 Tons

Geo Fabric: 6' x 0

Rebar 4' 95

Rebar 2' 70

Standing Stone Creek
Huntingdon County
Section 3

| | |
|------------------------|----|
| Logs 10' x 10-12" Dia. | 32 |
| Logs 15' x 10-12" Dia. | 0 |
| Logs 20' x 8-12" Dia. | 40 |
| Logs 25' x 8-12" Dia. | 0 |
| Logs 30' x 8-12" Dia. | 0 |

Rootwads 10' stem attached to 4-5' rootball: 0

Stone:

12-24" Dia. 200 Tons

12-18" Dia. 0

3-6" Dia. 0

24-36" Dia. 20 Tons

Geo Fabric: 6' x 0

Rebar 4' 84

Rebar 2' 64

Standing Stone Creek
Huntingdon County
Section 4

| | |
|------------------------|---|
| Logs 10' x 10-12" Dia. | 6 |
| Logs 15' x 10-12" Dia. | 0 |
| Logs 20' x 8-12" Dia. | 6 |
| Logs 25' x 8-12" Dia. | 0 |
| Logs 30' x 8-12" Dia. | 0 |

Rootwads 10' stem attached to 4-5' rootball: 0

Stone:

12-24" Dia. 160 Tons

12-18" Dia. 0

3-6" Dia. 0

24-36" Dia. 60 Tons

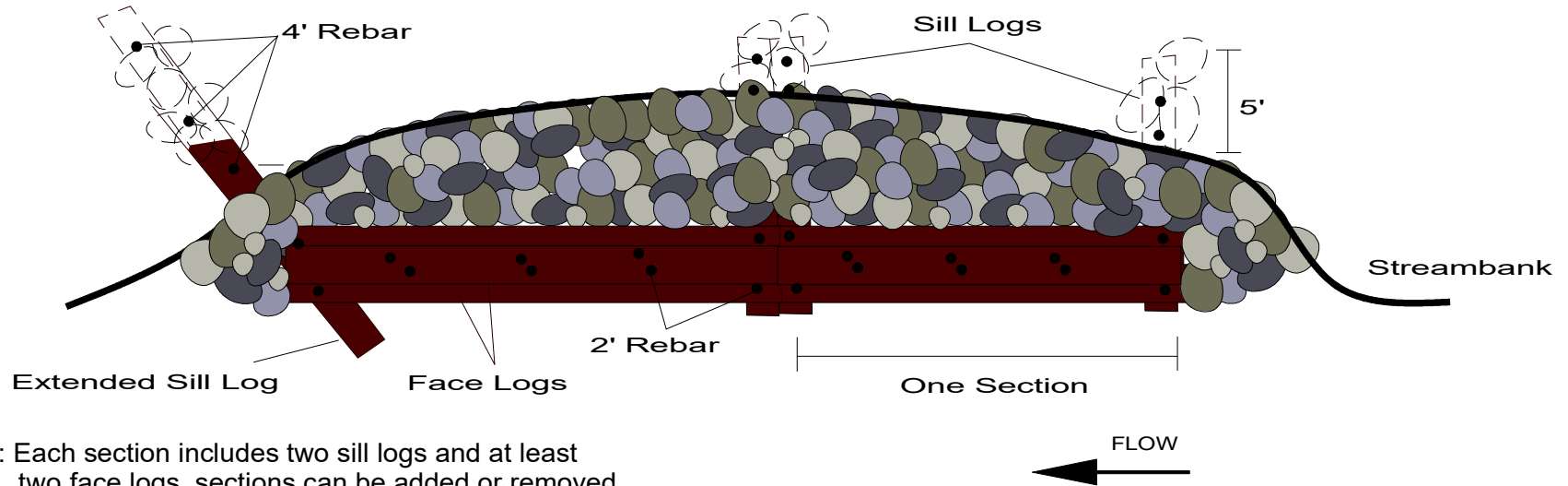
Geo Fabric: 6' x 0

Rebar 4' 12

Rebar 2' 12

MODIFIED MUD SILL CRIBBING

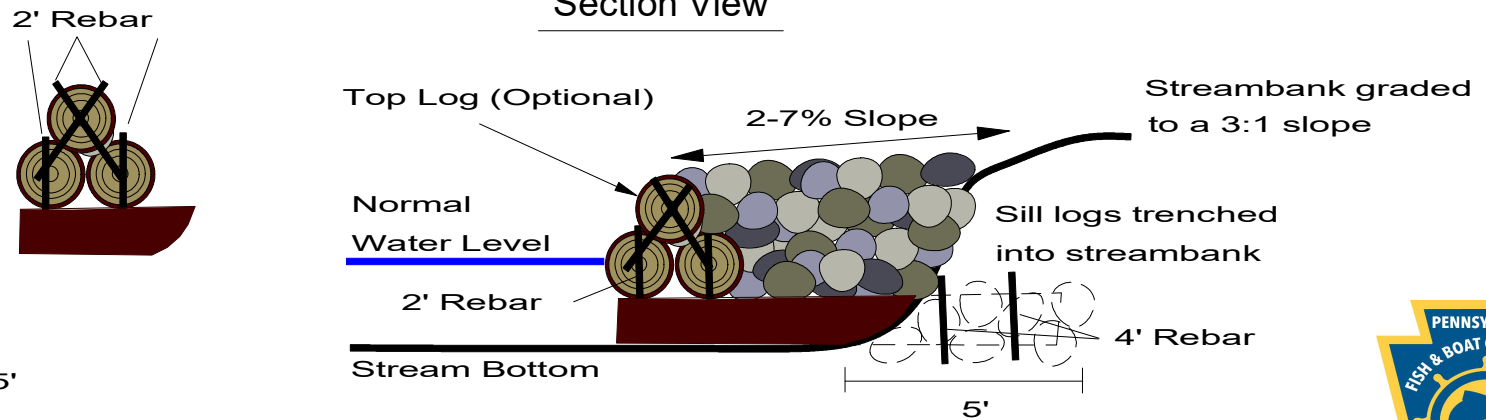
Plan View



Note: Each section includes two sill logs and at least two face logs, sections can be added or removed

Note: Ending section can have extended sill log

Section View



Sill Logs = 10-15'

Face Logs = 20'

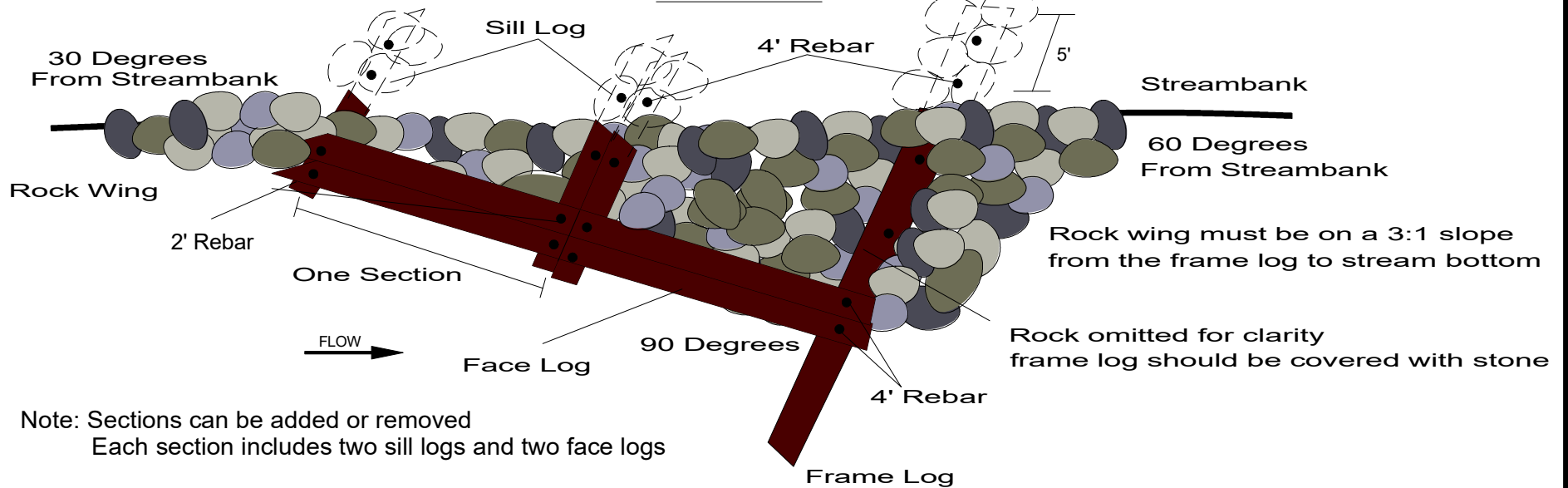
Log Dia. = 8-12"

DHM, PFBC 2022



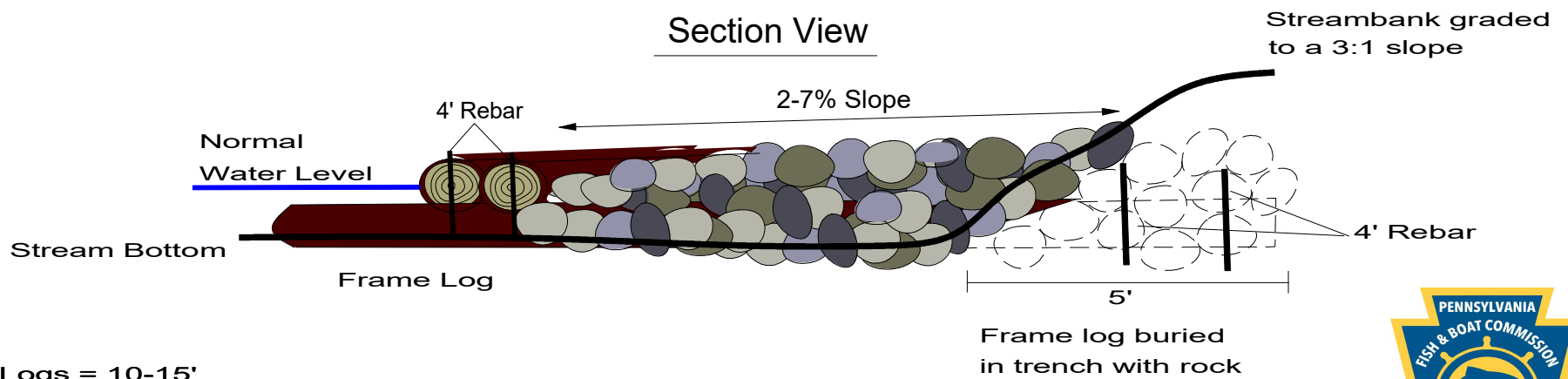
LOG FRAMED STONE DEFLECTOR

Plan View



Note: Sections can be added or removed
Each section includes two sill logs and two face logs

Section View

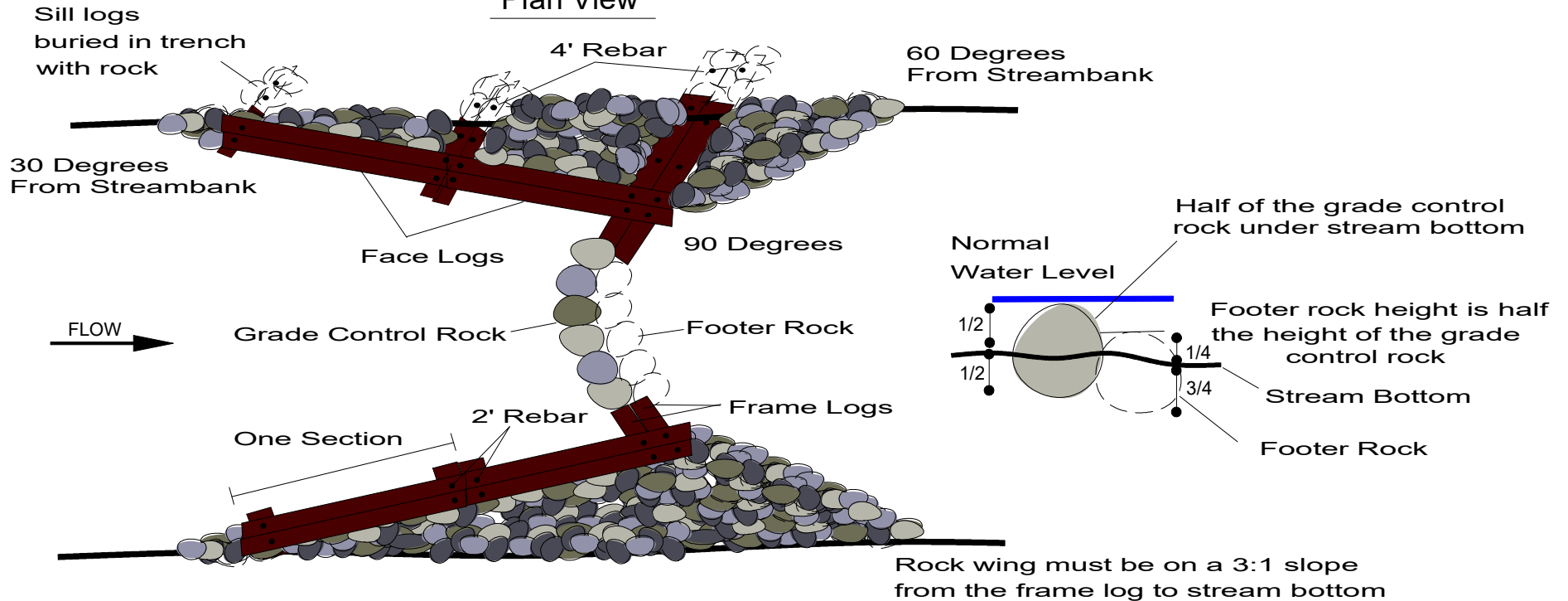


Sill Logs = 10-15'
Face Logs = 20'
Log Dia.= 8-12"



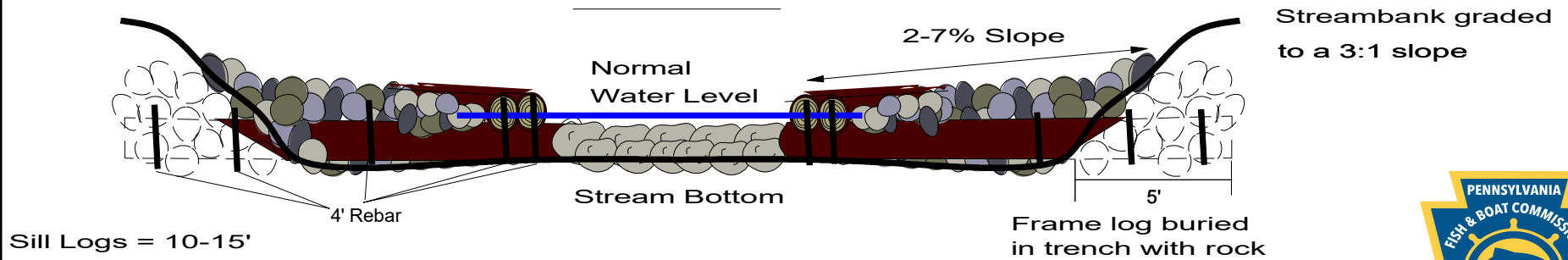
LOG FRAMED CROSS VANE WITH ROCK THROAT

Plan View



Note: Sections can be added or removed

Section View



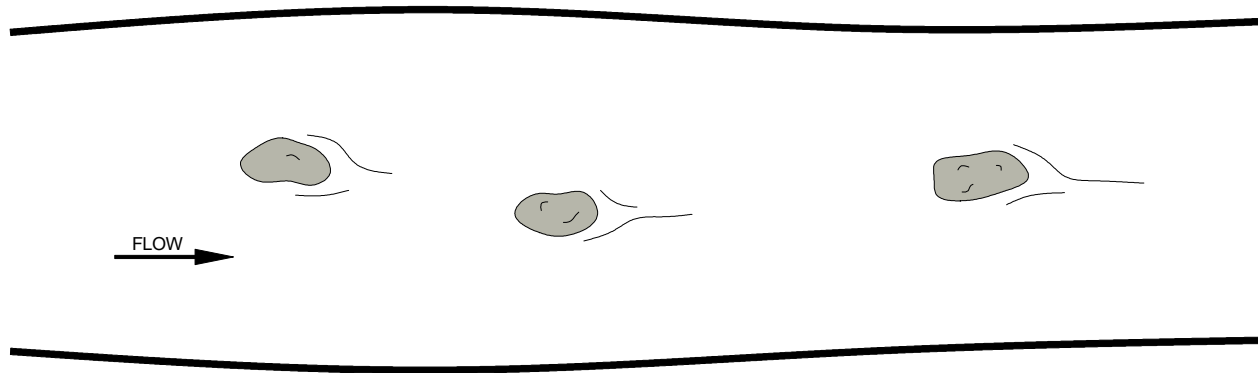
Sill Logs = 10-15'
 Face Logs = 20'
 Frame Logs = 20-30'
 Log Dia. = 8-12"

DHM, PFBC 2022



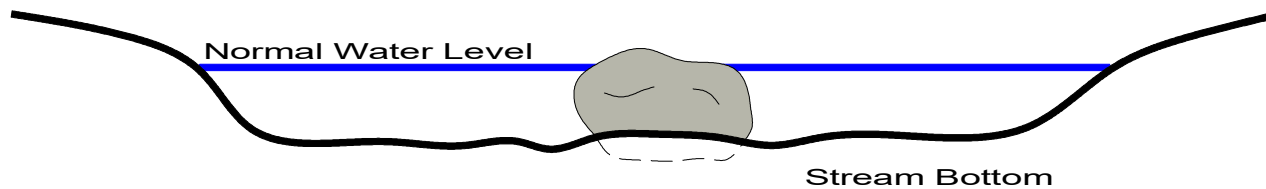
RANDOM BOULDER PLACEMENT

Plan View



Note: Place boulders in the middle third of the wetted width of the stream to prevent flow deflection into the streambanks

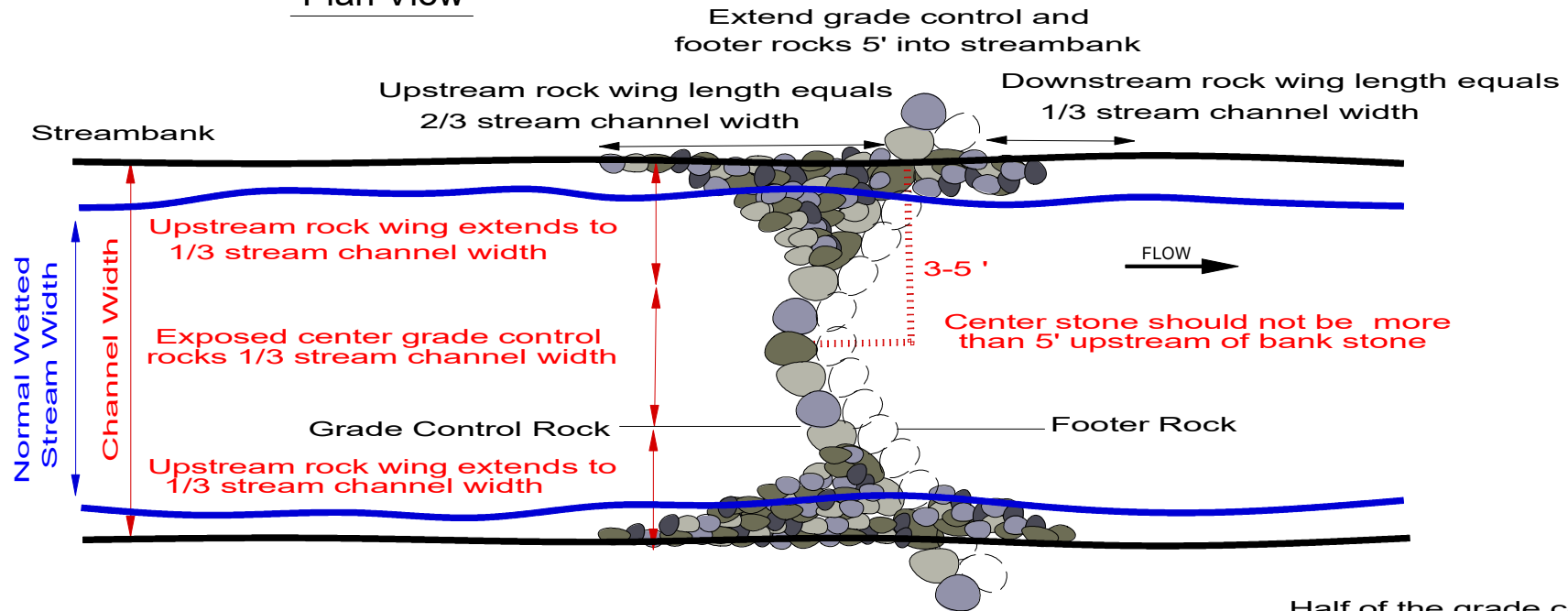
Section View



Note: Boulder should be large enough not to be displaced during high flow periods
Boulder height should be within 2" of normal water level

ROCK CROSS VANE

Plan View



Streambank graded to a 3:1 slope

Section View

